

# Symmetra<sup>®</sup> LX Physical Installation Guide Rack-mount UPS

For use with Symmetra LX UPS models:

200 V, 4–8 kVA	200 V, 4–16 kVA
208/240 V, 4–8 kVA	208/240 V, 4–16 kVA
220/230/240 V, 4–8 kVA	220/230/240 V, 4–16 kVA

## Important Safety and Installation Instructions

Symmetra LX is a scalable, redundant UPS for data centers and high availability applications. Install the UPS as shown in this guide.

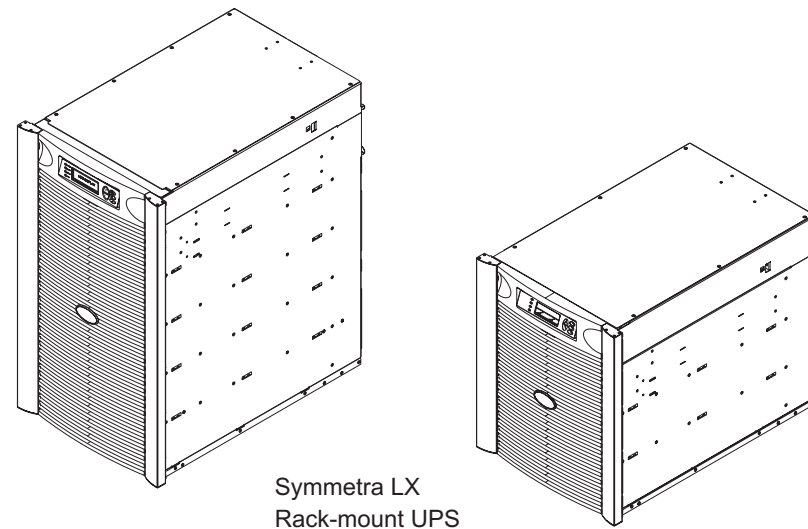
Your configuration may include the optional Extended Run Cabinet.

See and retain the product documentation shipped with your system for other important installation, operation, and maintenance instructions.

Illustrations are representative. Your Symmetra LX configuration, including components and optional APC equipment, may be different from the models shown in this guide.

Entire contents copyright 2005 by American Power Conversion Corporation. All rights reserved. Reproduction in whole or in part without permission is prohibited.

APC, the APC logo, PowerChute, InfraStruXure, Smart-UPS and Symmetra are registered trademarks of American Power Conversion Corporation. All other trademarks are the property of their respective owners.



## Physical Installation



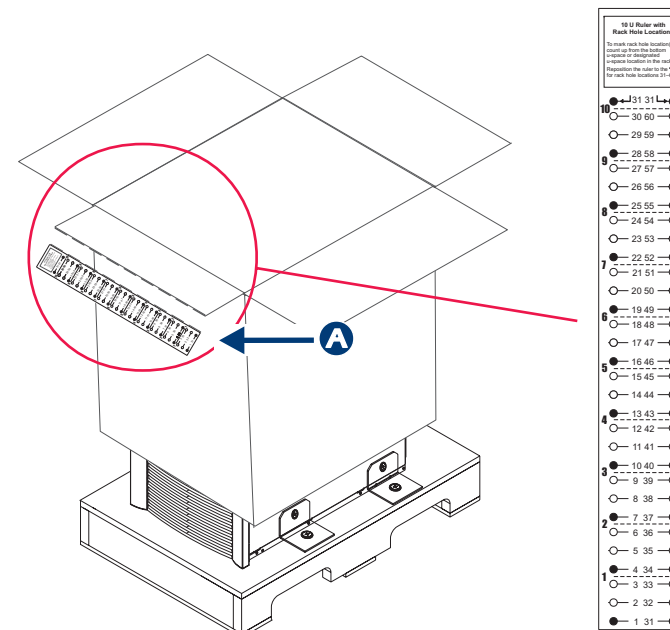
Read, understand and follow ALL safety instructions contained in the *Symmetra LX Safety Instructions and General Information Guide*. Failure to follow safety instructions and warnings could result in equipment damage, serious injury, or death.



The UPS, extended run cabinets, and battery modules are heavy. Forklifts may assist in transporting pallets. Mechanical assistance may be necessary for installation in upper rack locations.

### ① Unpack Equipment

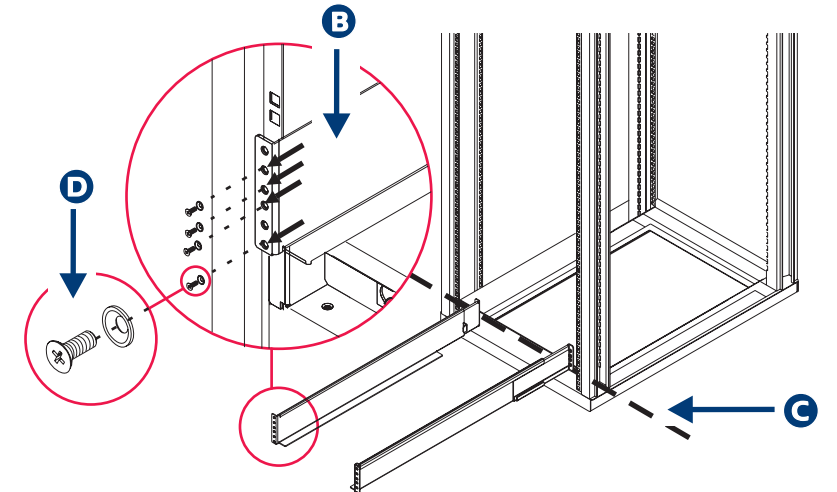
- 1.1 Move the pallet to the installation site.
- 1.2 Remove the shipping straps to open the cardboard box containing the unit.
- 1.3 Remove and retain the cardboard ruler **A**, literature kit, and rail kit.
- 1.4 Remove the cardboard box.



To mark each hole location, place the ruler against the rack and mark the hole location. Reposition the ruler to the next hole and mark the location.
31 31
30 60
29 59
28 58
27 57
26 56
25 55
24 54
23 53
22 52
21 51
20 50
19 49
18 48
17 47
16 46
15 45
14 44
13 43
12 42
11 41
10 40
9 39
8 38
7 37
6 36
5 35
4 34
3 33
2 32
1 31

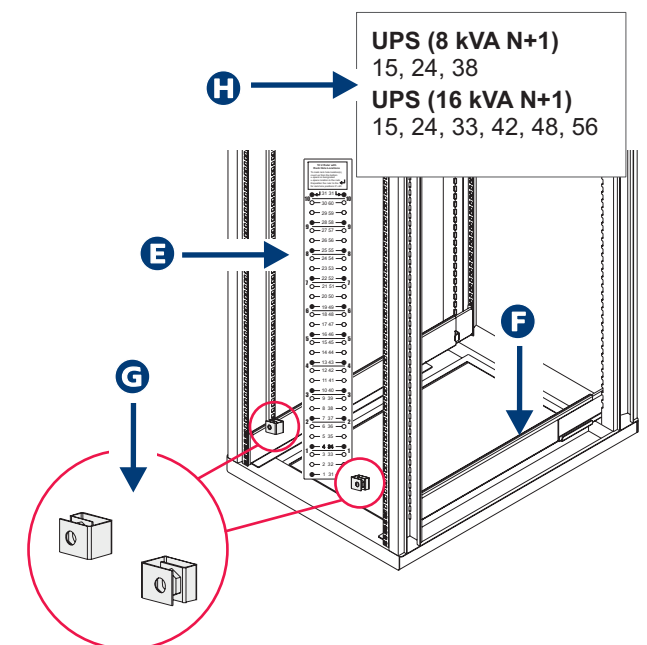
### ② Install Rails

- 2.1 Position the rails **B** at the bottom of the desired location for the UPS **C**.
- 2.2 Attach the rails to the front of the rack with four countersunk screws and washers **D**. (The second and sixth holes from the bottom are not used.)
- 2.3 Attach the rails to the rear of the rack with four countersunk screws and washers **D**.



### ③ Install Clip Nuts

- 3.1 Align the bottom of the ruler **E** with the rails **F** and install the clip nuts **G** at the appropriate locations **H** in the rack.
- 3.2 Reposition the ruler for rack hole locations 31–60.



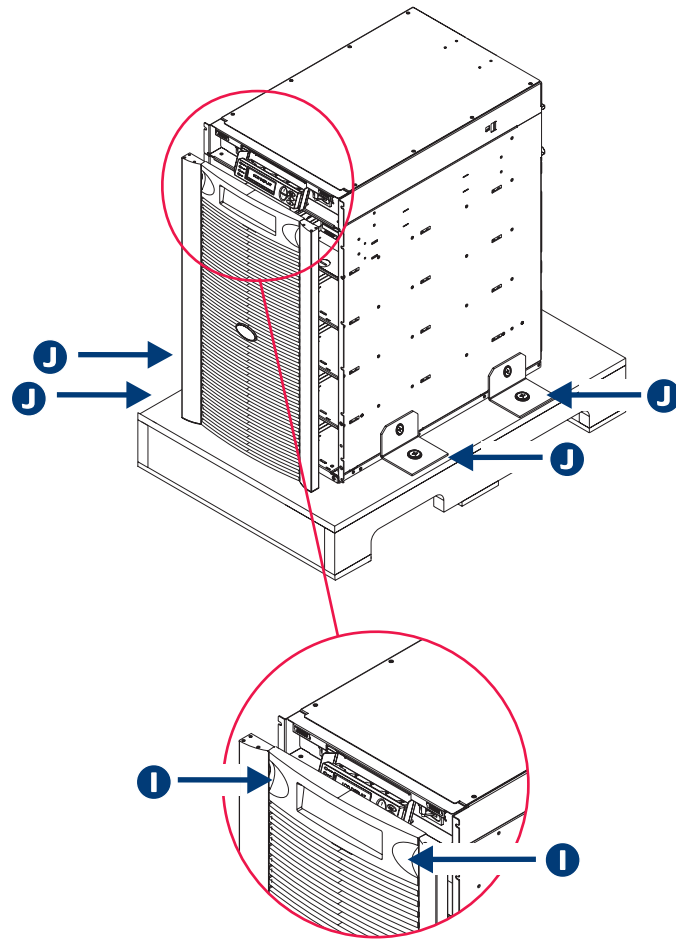
#### ④ Remove Door and Shipping Brackets

##### 4.1 Remove the door.

- Grab onto the door at the tabs **I**, gently pull forward to release the top of the door from the frame, then lift and remove.

##### 4.2 Remove the four shipping brackets **J** securing the unit to the pallet.

- Leave the unit on the pallet until rack installation (see Step 5).



#### ⑤ Install UPS in the Rack



Caution

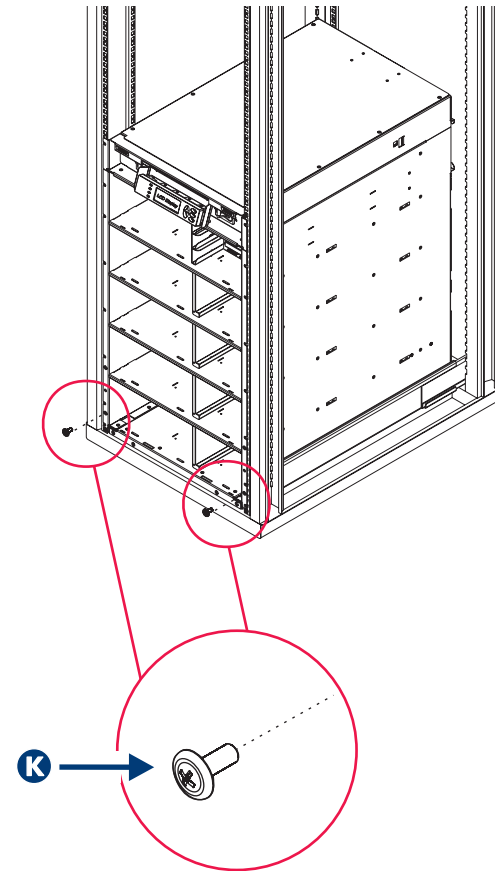
- Two people are required to move the unit due to its weight.
- Battery and power modules are not pre-installed in the UPS due to their weight. Do not install the modules until the UPS frame is securely installed in the rack.

##### 5.1 Install the UPS in the rack.

- With two people, one on either side of the unit, grab onto the front and rear corners of the frame.
- Lift and slide the rear of the unit onto the rails in the rack. Slide the unit until it is fully seated in the rack.

##### 5.2 Secure the unit in the rack.

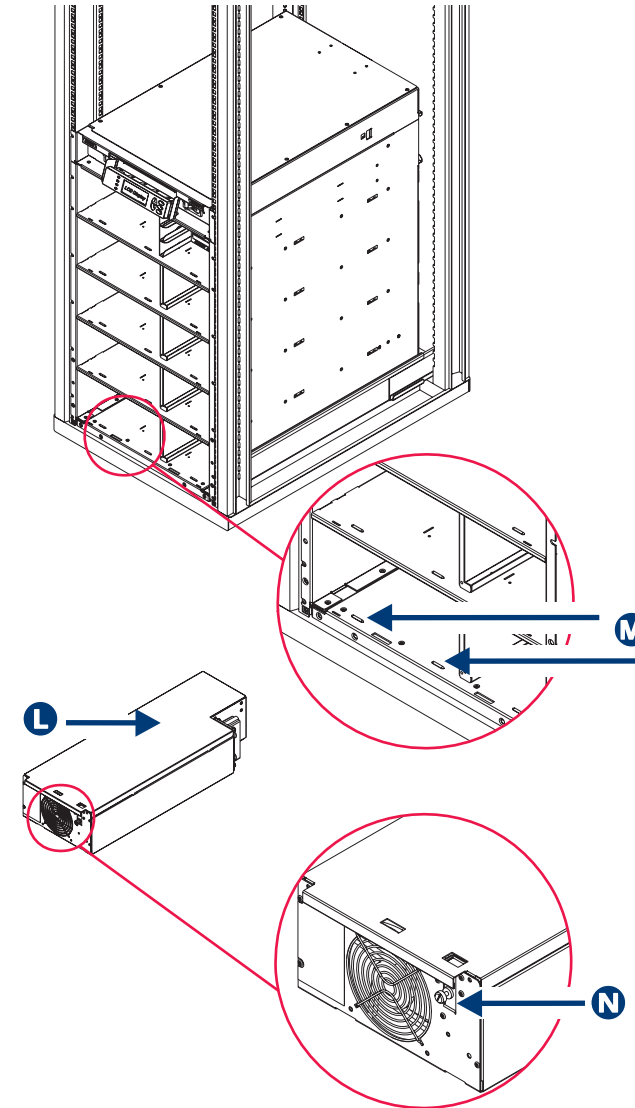
- At the appropriate locations, install the ornamental screws **K** from the rail kit.



#### ⑥ Install Power Modules

##### 6.1 Slide the power module **L** into the frame until the front of the module is behind the safety catches **M**.

##### 6.2 Slide the latch **N** up and tighten the captive screw.



#### ⑦ Install Battery Modules and Door

##### 7.1 Insert the first battery module into the empty bay at the bottom right of the UPS. Install the remaining modules from the bottom upward.

- Install the battery modules so that the handles are at the top and right side **O**.

##### 7.2 Slide each battery module **P** into the frame until the front of the module is behind the safety catch **Q**.

##### 7.3 Check that each battery module is in the connected position. Use a coin to turn the battery switch counterclockwise to the ON (connected) position.

##### 7.4 Insert the tabs on the bottom rear of the door into the slots on the base of the unit.

##### 7.5 Push the top of the door towards the unit until the magnetic catches are engaged.

